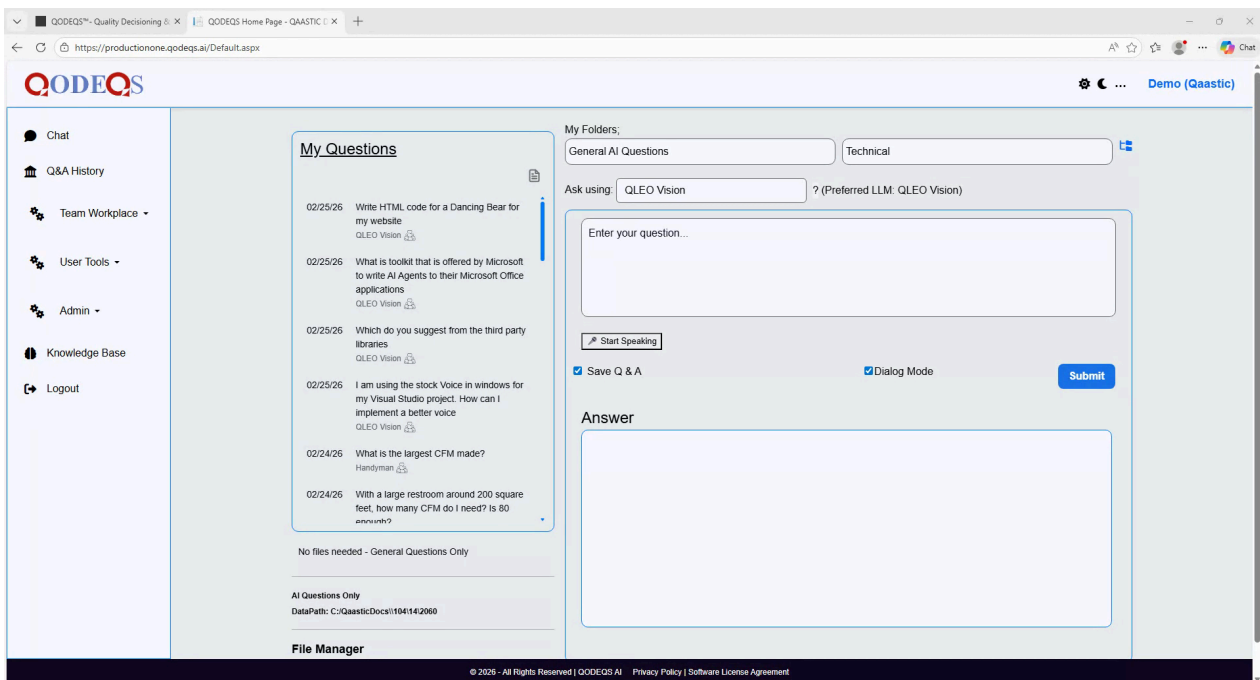


Introduction to QODEQS Collaborative AI

QODEQS is a collaborative AI platform that allows you to interact with multiple large language models (LLMs) at the same time, organize and share your work, and build truly collective intelligence across your team. This overview explains the core concepts and capabilities so you can understand how QODEQS supports richer, multi-perspective conversations and collaborative workflows.

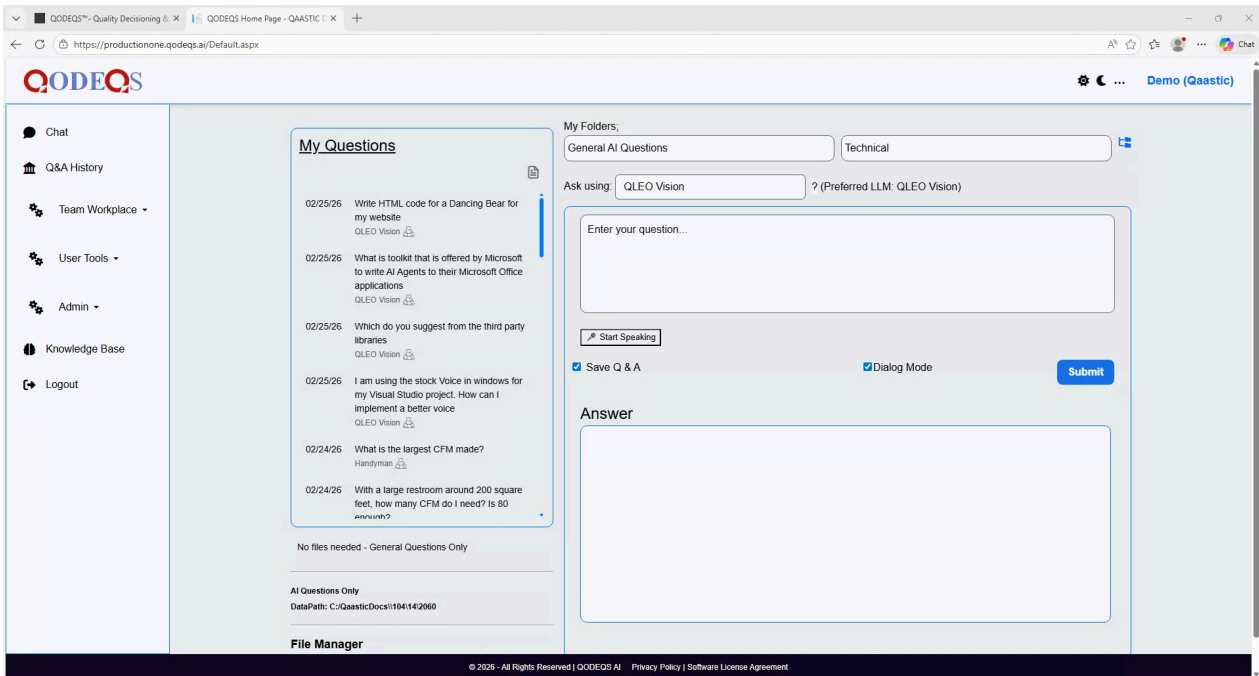
Step 1: Understand the Concept of Collaborative AI

Collaborative AI in Codex means you can use two or more of over 250 LLMs simultaneously within a single conversation. Instead of relying on a single model's perspective, Codex lets you bring multiple "voices" into the same dialogue, giving you richer optics and a more complete understanding of complex topics.

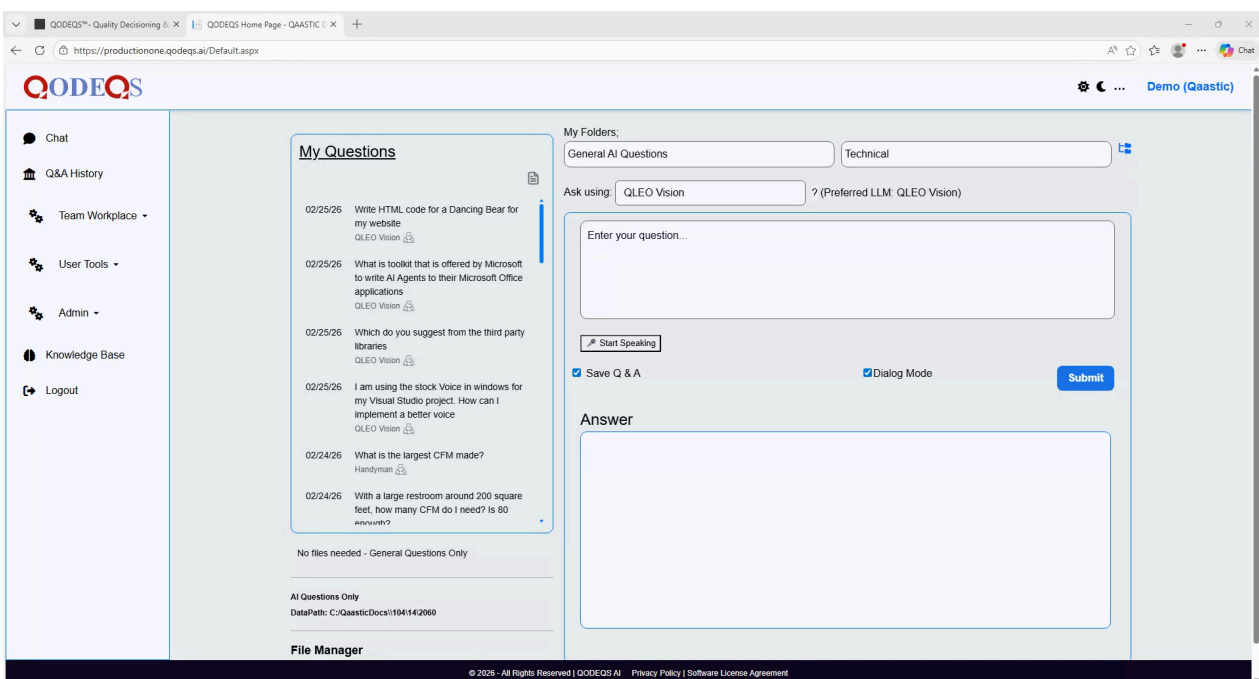


Step 2: Compare Collaborative AI to a Real-World Meeting

Imagine you are a CEO with 30 employees.



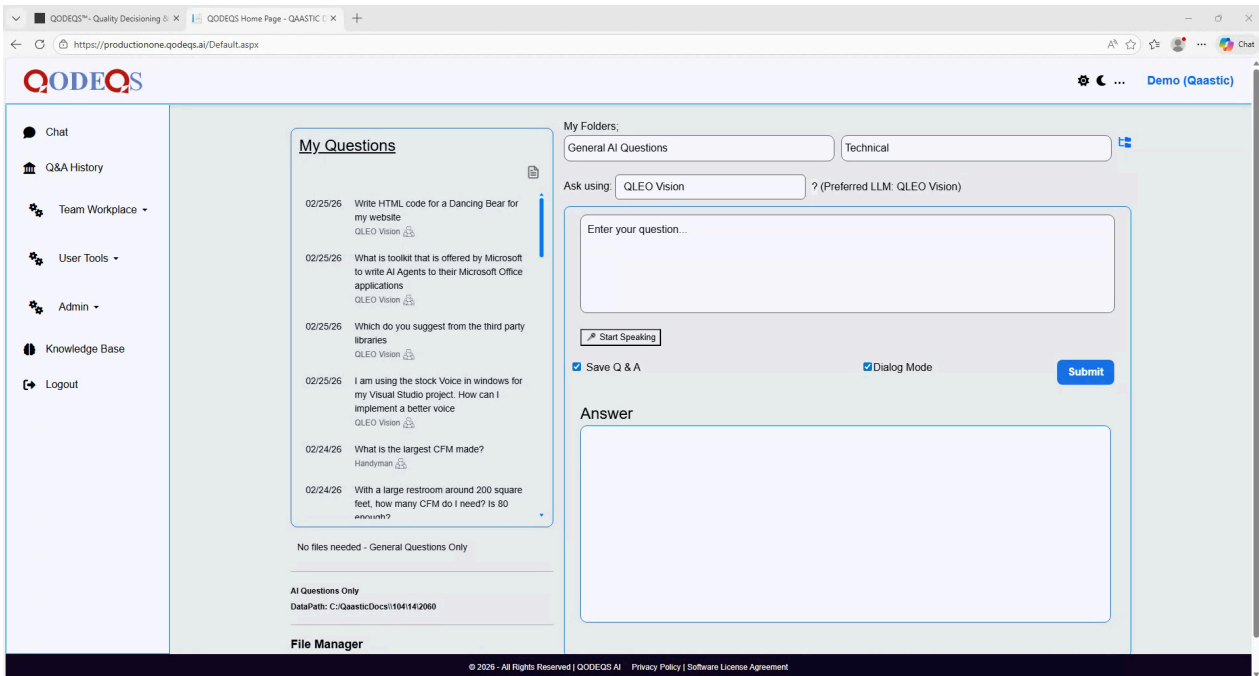
When you call a meeting, you don't spend the entire time talking to just one person. Instead, you move between different people in the room, drawing on their specific expertise as the conversation evolves. This natural flow of discussion is the inspiration behind how QODEQS structures multi-model conversations.



Step 3: See How Multiple Experts Shape a Single Conversation

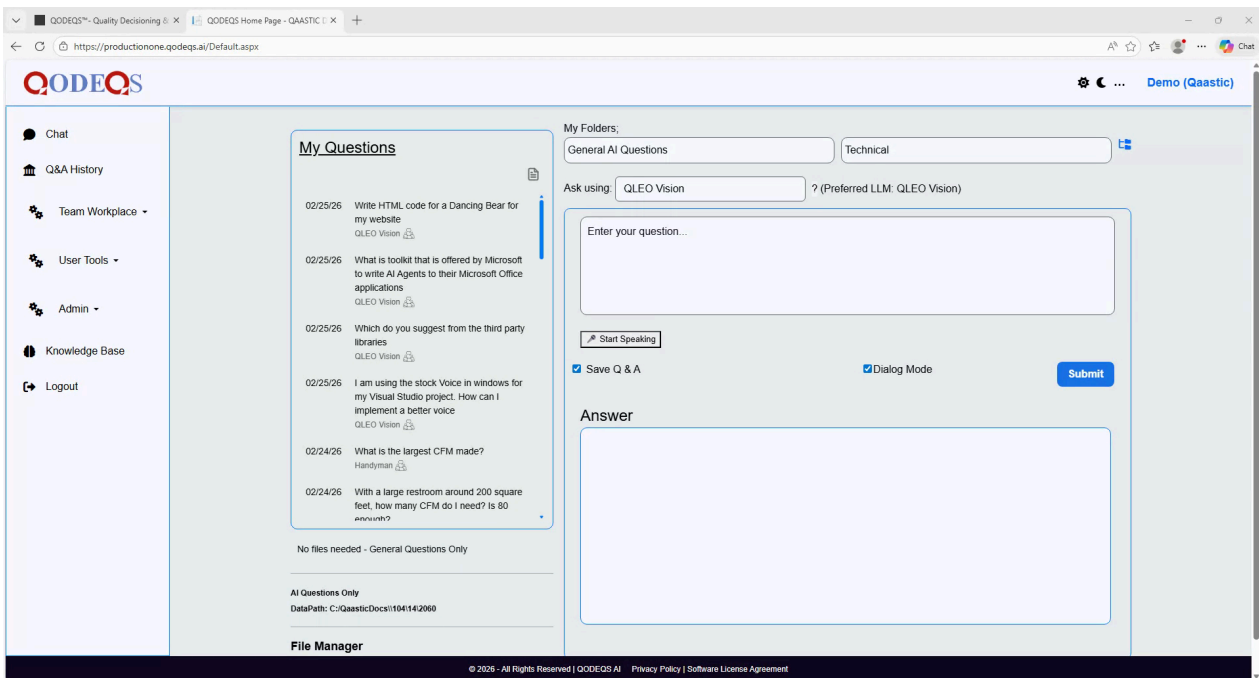
Continuing the CEO example:

- You might start by speaking with Joe, the sales manager, because the discussion begins with business development.
- As the topic shifts toward a legal issue with a customer, you turn to Bob, your in-house lawyer, who brings a very different legal perspective.



- When HR-related paperwork becomes relevant, you bring Sally from Human Resources into the conversation, adding yet another perspective.

In QODEQS, each LLM functions like one of these experts. By involving multiple models in the same dialogue, you gain a broader range of insights and better questions to ask, just as you would when talking to several specialists in a meeting.



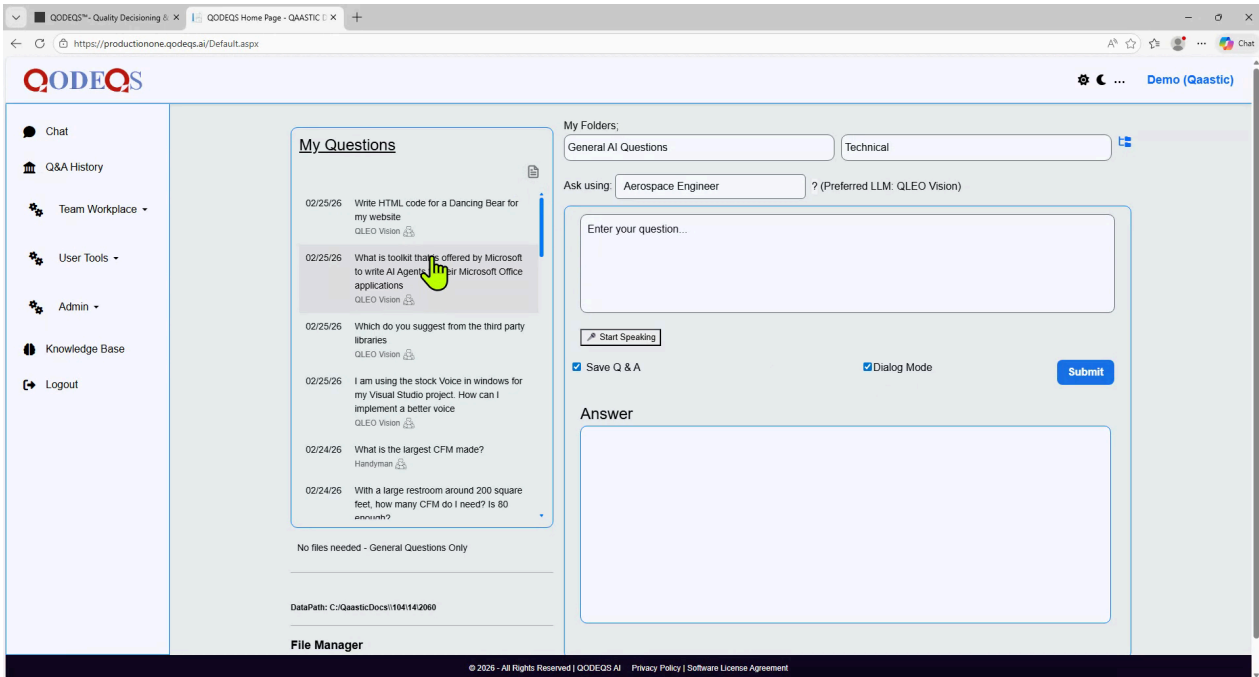
Step 4: Leverage Specialized Models Across Many Domains

Treat each QODEQS LLM as a domain expert. Codex offers models specialized in areas such as:

- Medicine and healthcare
- Law and legal counsel
- Accounting and taxation

- Aerospace engineering
- Biomedical fields
- Astronomy
- Business development
- And many more across over 250 available models

You can choose the right combination of models for your needs and conduct an ongoing, expert-level dialogue. Your questions and answers are automatically stored in the Q&A history, and your full conversations are saved indefinitely, so you can return to them at any time and resume the dialogue without losing context.

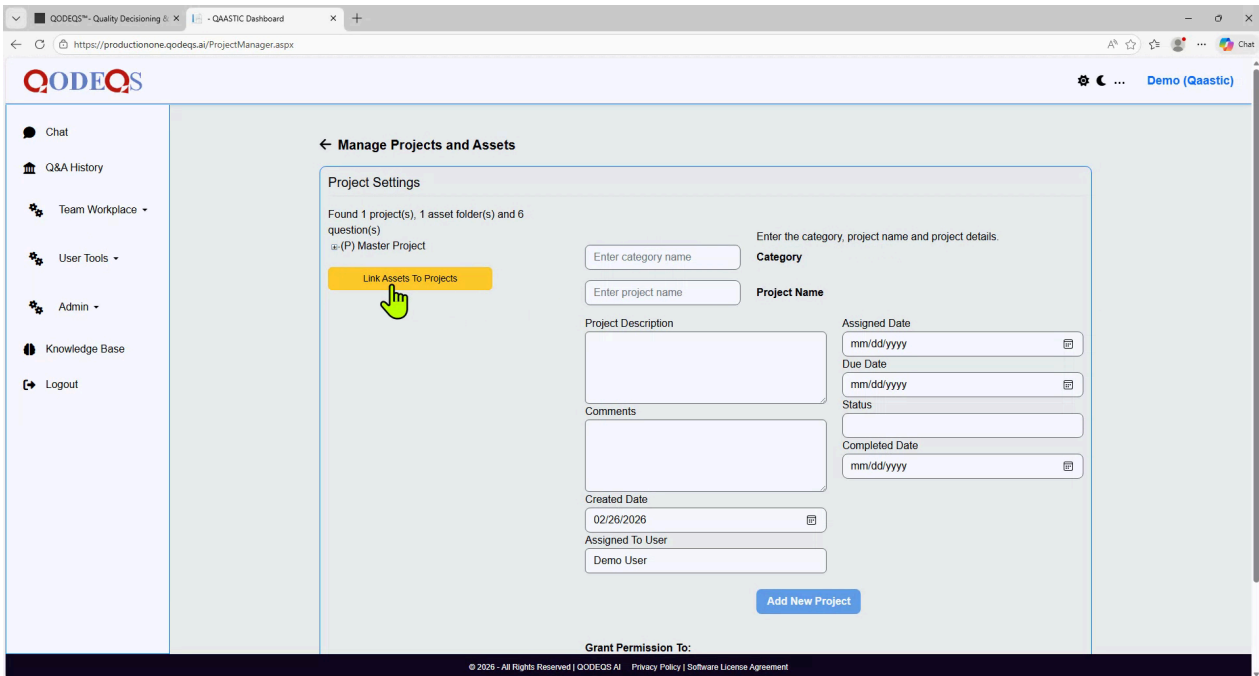


Step 5: Organize, Share, and Project-Manage Your Work

Codex also supports robust organization and collaboration features:

- Create and manage files within folder structures.
- Share files with others in a team workspace.
- Create projects and link all related assets—from different employees, colleagues, and conversations—into a single, cohesive project space.

These capabilities make QODEQS a truly collaborative AI environment, where knowledge, context, and outputs are easily shared and reused across your organization.



Step 6: Begin Exploring QODEQS

With multi-model conversations, expert specializations, persistent dialogue history, and integrated project and file management, QODEQS is designed to support deep, collaborative work. Start exploring the platform to see how these features can enhance your team's productivity and decision-making.